

U **Priming Assisted Centrifugal Environmental
Silent Pump w/Autostart
Model PA6C60-C4.4T-ESP /S1**



VARIOUS PATENTS APPLY



Size 6" x 6"

Total Head		Capacity of Pump in U.S. Gallons per Minute (GPM) at Continuous Performance			
P.S.I.	Feet				
59.0	136	600	600	600	600
52.0	120	920	1020	1020	1020
43.4	100	1035	1420	1440	1480
34.7	80	1040	1440	1720	1840
26.0	60	1100	1440	1740	1990
17.3	40	1150	1445	1755	2000
8.7	20	1070	1450	1760	2000
Suction Lift		25'	20'	15'	10'



PUMP SPECIFICATIONS

Size: 6" x 6" (152 mm x 152 mm) NPT Male.
Casing: Ductile Iron 65-45-12.
 Maximum Operating Pressure 99 psi (683 kPa).*
Semi-Open, Two Vane Impeller: Ductile Iron 65-45-12.
 Handles 3" (76,2 mm) Diameter Spherical Solids.
Impeller Shaft: Stainless Steel 17-4 PH.
Replaceable Wear Plate: Ductile Iron 80-60-03.
Bearing Housing: Gray Iron 30.
Seal Plate: Gray Iron 30.
Seal: Mechanical, Oil-Lubricated. Silicon Carbide Rotating and Stationary Faces. Stainless Steel 316 Stationary Seat. Fluorocarbon Elastomers (DuPont Viton® or Equivalent). Stainless Steel 18-8 Cage and Spring. Maximum Temperature of Liquid Pumped, 160°F (71°C).*
Shaft Sleeve: Stainless Steel 17-4 PH.
Priming Chamber: Gray Iron 30 Housing w/Stainless Steel Float and Linkage.
Discharge Check Valve: Ductile Iron Housing w/Buna-N Flapper.
Radial and Thrust Bearings: Open Double Ball.
Bearing and Seal Cavity Lubrication: SAE 30 Non-Detergent Oil.
O-Rings: Buna-N.
Gaskets: Resistant Synthetic Rubber, Cork, PTFE, Vegetable Fiber, and Compressed Synthetic Fibers.
Hardware: Standard Plated Steel.
Bearing and Seal Cavity Oil Level Sight Gauges.
 *Consult Factory for Applications Exceeding Maximum Pressure and/or Temperature Indicated.
Standard Equipment: Soundproof (EPA Average 73 dBA at 23 feet [7 meters] Under Load per CPB Standards) Lightweight Aluminum Enclosure - Removable for Maintenance of Pump or Engine - w/Padlockable Door Panels. Spill Containment Base w/Integral Drains and Fork Lift Pockets. Gear-Driven Air Compressor. Strainer..Heated Priming Chamber Single Ball Type Float Switch.**
Optional Equipment: Suction Vacuum and Discharge Pressure Gauge Kit. Over-the-Road Trailer (Meets DOT Requirements) Available w/Either Electric or Hydraulic Surge Brakes, Running Lights, Jack Stands and Safety Cables/Chains. Submersible Transducer Liquid Level Sensor (50 Ft. [15M] Cable Standard, Alternate Lengths Available)

****50 Ft. (15 m) Standard Length; Dual Switches and Alternate Cable Lengths Available From the Factory.**

WARNING!
 Do not use in explosive atmosphere or for pumping volatile flammable liquids.

ENGINE SPECIFICATIONS

Model: Caterpillar C4.4T.
Type: Four Cylinder, Four Cycle, Turbocharged, Liquid Cooled Diesel Engine.
Displacement: 269 Cu. In. (4,41 Liters).
Governor: Mechanical.
Lubrication: Forced Circulation.
Air Cleaner: Dry Type.
Oil Reservoir: 7.3 U.S. Qts. (6,9 liters) Refill.
Fuel Tank: 88 U.S. Gals. (330 liters).
Full Load Operating Time: 21.7 Hrs Estimated.
Starter: 12V Electric.

Standard Features: Full Feature Control including Low Oil Pressure and High Coolant Temperature Safety Shut Down Switches. Autostart Instrument Panel Includes: Tachometer, Voltmeter, Hourmeter, Coolant Temperature Gauge, Oil Pressure Gauge, Manual/ Stop/Auto Key Switch, 10 Amp , Startup Warning Delay. Muffler w/Weather Cap. Throttle Control.

CATERPILLAR PUBLISHED PERFORMANCE:
 Maximum Gross BHP (Continuous) 77 (57,4 kW) @ 2200 RPM



THE GORMAN-RUPP COMPANY • MANSFIELD, OHIO

GORMAN-RUPP OF CANADA LIMITED • ST. THOMAS, ONTARIO, CANADA

www.grpumps.com

Specifications Subject to Change Without Notice

Printed in U.S.A.

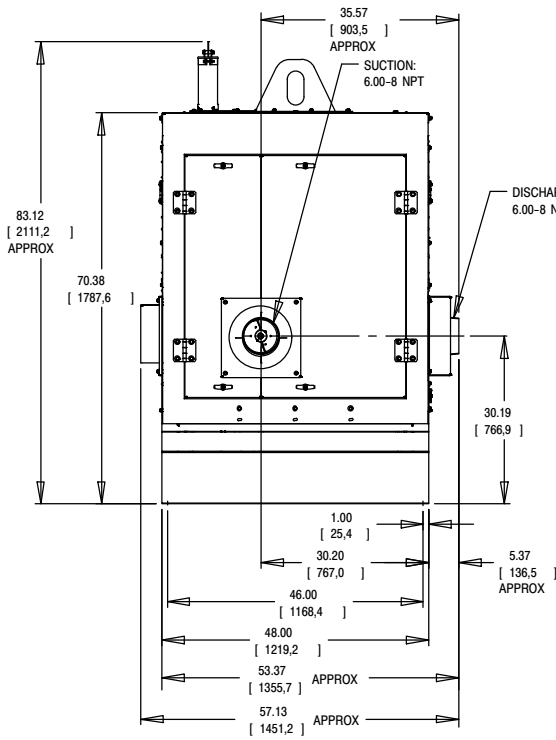
Specification Data

SECTION CAT, PAGE 18C

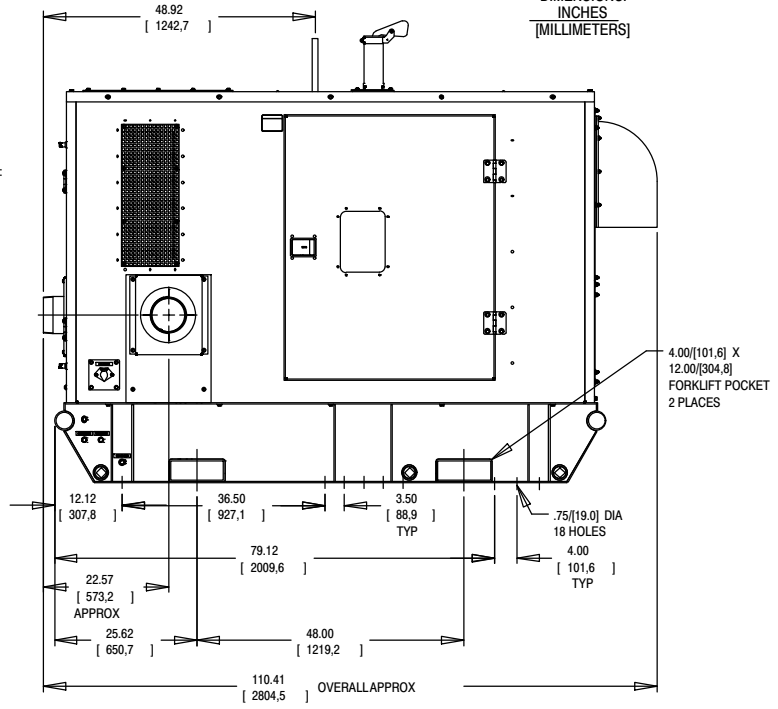
APPROXIMATE
DIMENSIONS and
WEIGHTS

NET WEIGHT:
SHIPPING WEIGHT:

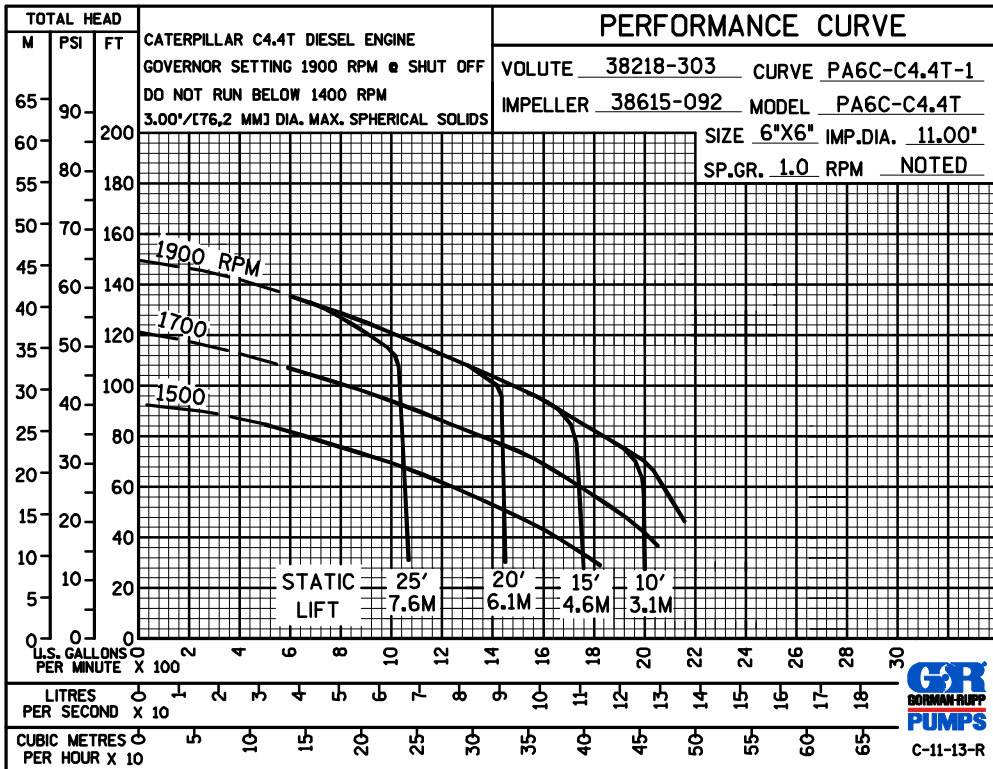
SKID BASE
4270 LBS. (1936 KG.)
4660 LBS. (2114 KG.)



POWERED BY CATERPILLAR C4.4T DIESEL ENGINE



DIMENSIONS:
INCHES
[MILLIMETERS]



THE GORMAN-RUPP COMPANY • MANSFIELD, OHIO

GORMAN-RUPP OF CANADA LIMITED • ST. THOMAS, ONTARIO, CANADA

Specifications Subject to Change Without Notice

Printed in U.S.A.