

A C D E U

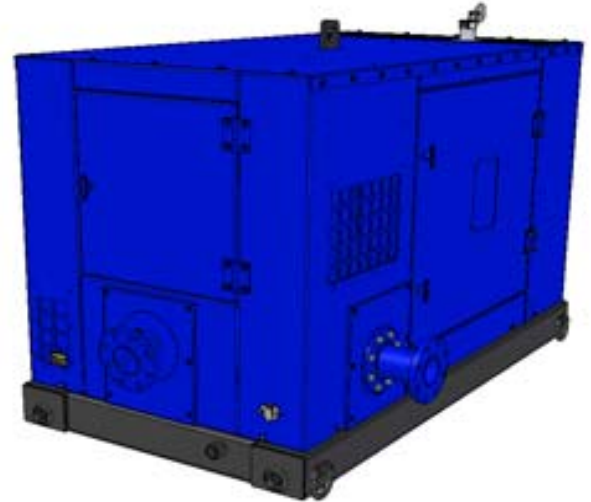


VARIOUS PATENTS APPLY

**Diesel Engine Driven
Priming Assisted Centrifugal Pump
w/Autostart
Model PA4A60C-C2.2T-ESP
Size 4" x 4"**



Total Head		Capacity of Pump in U.S. Gallons per Minute (GPM) at Continuous Performance			
P.S.I.	Feet				
52.9	122	185	185	185	185
52.0	120	220	220	220	220
47.7	110	350	395	395	395
43.4	100	450	530	535	535
39.0	90	475	580	660	660
34.7	80	480	592	720	775
30.3	70	485	600	725	850
26.0	60	490	610	730	860
Suction Lift		24'	20'	15'	10'



PUMP SPECIFICATIONS

Size: 4" x 4" (102 mm x 102 mm) Flanged.
Casing: Gray Iron 30.
 Maximum Operating Pressure 88 psi (607 kPa).*
Semi-Open Type, Two Vane Impeller: Ductile Iron 65-45-12.
 Handles 3" (76,2 mm) Diameter Spherical Solids.
Impeller Shaft: Stainless Steel 17-4 PH.
Replaceable Wear Plate: Carbon Steel 1015.
Bearing Housing: Gray Iron 30.
Seal Plate: Gray Iron 30.
Seal: Cartridge Type, Mechanical, Oil-Lubricated, Double Floating, Self-Aligning. Silicon Carbide Rotating and Stationary Faces. Stainless Steel 316 Stationary Seat. Fluorocarbon Elastomers (DuPont Viton® or Equivalent). Stainless Steel 18-8 Cage and Spring. Maximum Temperature of Liquid Pumped 160°F (71°C).*
Shaft Sleeve: Alloy Steel 4130.
Priming Chamber: Gray Iron 30 Housing w/Stainless Steel Float and Linkage.
Discharge Check Valve: Ductile Iron Housing w/Buna-N Flapper.
Radial Bearing: Open Single Row Ball.
Thrust Bearing: Open Double Row Ball.
Bearing and Seal Cavity Lubrication: SAE 30 Non-Detergent Oil.
Gaskets: Vegetable Fiber and Buna-N.
O-Rings: Buna-N.
Hardware: Standard Plated Steel.
Bearing and Seal Cavity Oil Level Sight Gauges.
**Consult Factory for Applications Exceeding Maximum Pressure and/or Temperature Indicated.*
Standard Equipment: Soundproof (EPA Average 68 dBA at 23 feet [7 meters] Under Load) Lightweight Aluminum Enclosure – Removable for Maintenance of Pump or Engine – w/Padlockable Door Panels. Gear-Driven Air Compressor. Combination Skid Base w/Fuel Tank. Strainer. Single Ball Type Float Switch.**
***50 Ft. (15 m) Standard Length; Dual Switches and Alternate Cable Lengths Available From the Factory.*
Optional Equipment: Battery. High Speed (55 MPH/89 KM/H) Single Axle Pneumatic-Tired Wheel Kit w/w₀ DOT-Approved Lights and Electric Brakes. Tandem Axle Over-the-Road Trailer (Meets DOT Requirements) Available w/Either Electric or Hydraulic Surge Brakes, Running Lights, Jack Stands and Safety Cables/Chains. EPS w/Submersible Transducer Liquid Level Sensor (50 Ft. [15 M] Cable Standard, Alternate Lengths Available).

WARNING!
Do not use in explosive atmosphere or for pumping volatile flammable liquids.

ENGINE SPECIFICATIONS

Model: Caterpillar C2.2T.
Type: Four Cylinder, Four Cycle, Turbocharged, Liquid Cooled Diesel Engine.
Displacement: 134 Cu. In. (2,2 Liters).
Governor: Electronic.
Lubrication: Forced Circulation.
Air Cleaner: Dry Type.
Oil Reservoir: 11.2 U.S. Qts. (10,6 liters) Refill.
Fuel Tank: 42 U.S. Gals. (159 liters).
Full Load Operating Time: 23.2 Hrs.
Starter: 12V Electric.
Standard Features: Low Oil Pressure and High Coolant Temperature Safety Shut Down Switches. Autostart Instrument Panel Includes: Tachometer, Voltmeter, Hourmeter, Coolant Temperature Gauge, Oil Pressure Gauge, Manual/Stop/Auto Key Switch, 10 Amp Pushbutton Circuit Breaker, Startup Warning Delay. Muffler w/Weather Cap. Throttle Control.

CATERPILLAR PUBLISHED PERFORMANCE:
Maximum Gross BHP (Intermittent) 61 (45 kW) @ 3000 RPM



THE GORMAN-RUPP COMPANY • MANSFIELD, OHIO

GORMAN-RUPP OF CANADA LIMITED • ST. THOMAS, ONTARIO, CANADA

www.grpumps.com

Specifications Subject to Change Without Notice

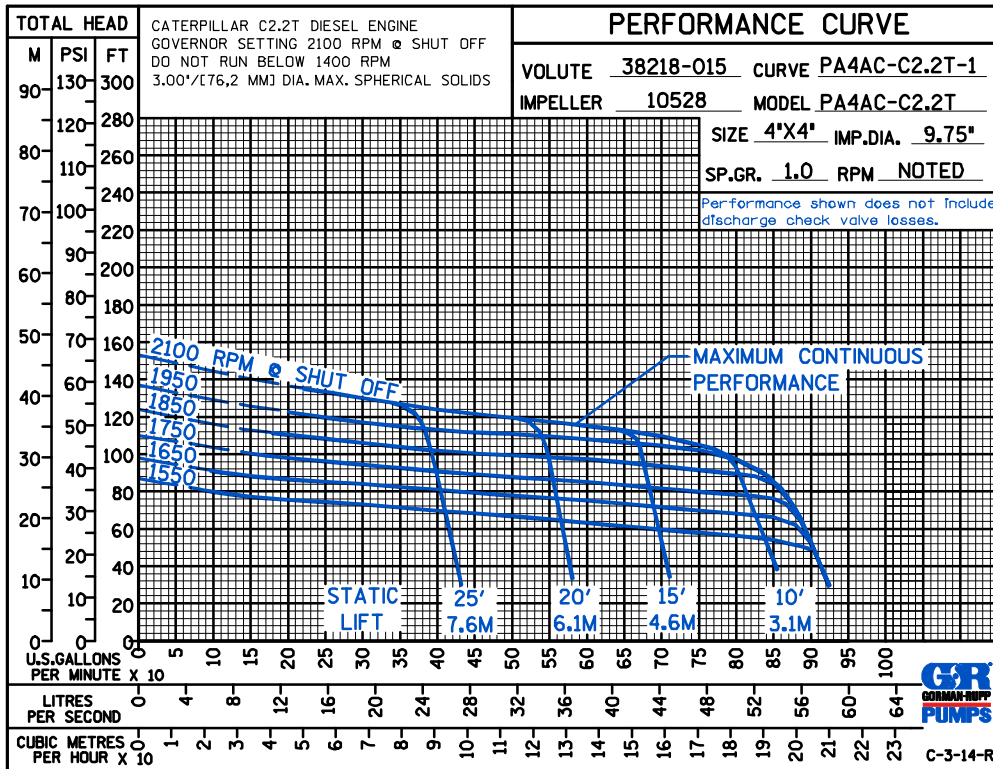
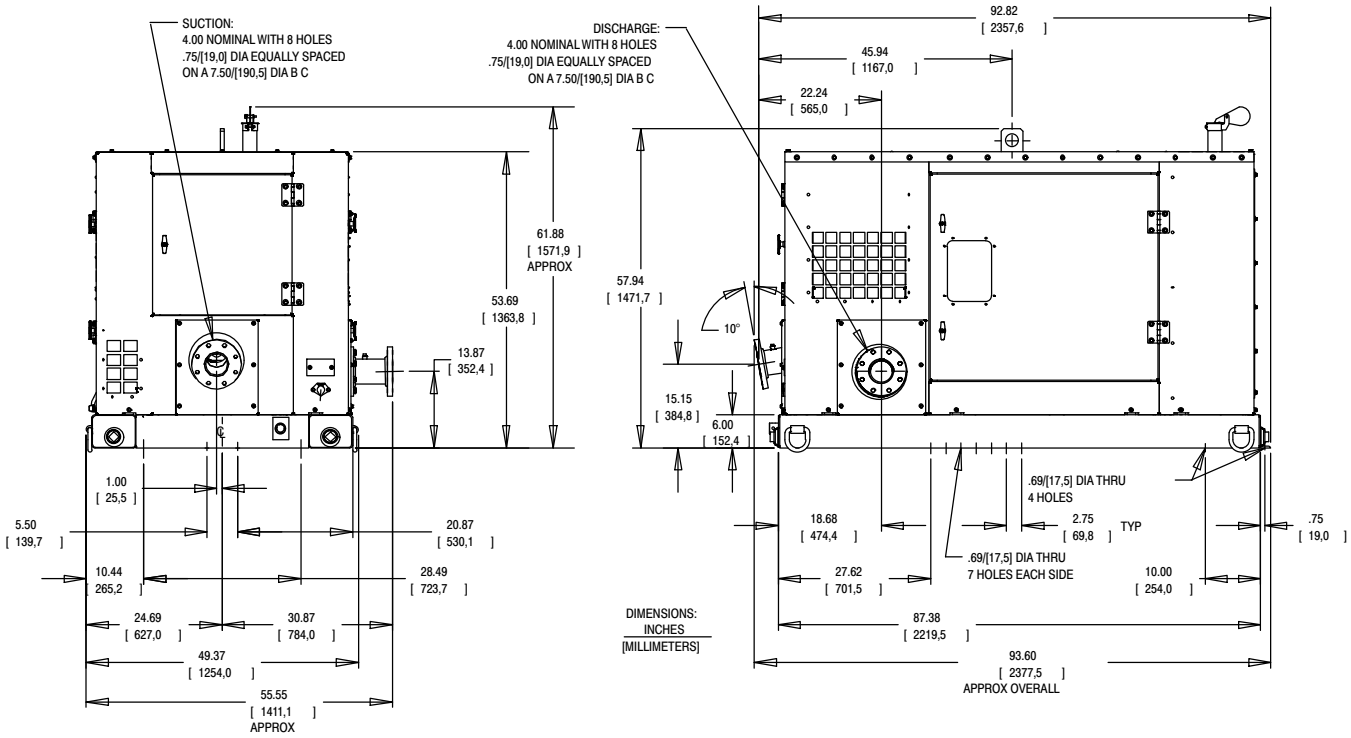
Printed in U.S.A.

Specification Data

APPROXIMATE DIMENSIONS and WEIGHTS

NET WEIGHT: SKID BASE LBS. (KG.) 2-WHEEL LBS. (K.G.)
SHIPPING WEIGHT: LBS. (KG.) LBS. (K.G.)
EXPORT CRATE SIZE: CU. FT. (CU. M.)

SECTION 42, PAGE 319C



THE GORMAN-RUPP COMPANY • MANSFIELD, OHIO

GORMAN-RUPP OF CANADA LIMITED • ST. THOMAS, ONTARIO, CANADA

Specifications Subject to Change Without Notice

Printed in U.S.A.