



# Priming Assisted Centrifugal Environmental Silent Pump w/Autostart Model PA4A60C-C2.2T-ESP /S1 Size 4" x 4"



Total Head		Capacity of Pump in U.S. Gallons per Minute (GPM) at Continuous Performance			
P.S.I.	Feet				
52.9	122	185	185	185	185
52.0	120	220	220	220	220
47.7	110	350	395	395	395
43.4	100	450	530	535	535
39.0	90	475	580	660	660
34.7	80	480	592	720	775
30.3	70	485	600	725	850
26.0	60	490	610	730	860
<b>Suction Lift</b>		<b>24'</b>	<b>20'</b>	<b>15'</b>	<b>10'</b>



**PUMP SPECIFICATIONS**

**Size:** 4" x 4" (102 mm x 102 mm) Flanged.  
**Casing:** Gray Iron 30.  
 Maximum Operating Pressure 88 psi (607 kPa).\*  
**Semi-Open Type, Two Vane Impeller:** Ductile Iron 65-45-12.  
 Handles 3" (76,2 mm) Diameter Spherical Solids.  
**Impeller Shaft:** Stainless Steel 17-4 PH.  
**Replaceable Wear Plate:** Carbon Steel 1015.  
**Bearing Housing:** Gray Iron 30.  
**Seal Plate:** Gray Iron 30.  
**Seal:** Cartridge Type, Mechanical, Oil-Lubricated, Double Floating, Self-Aligning. Silicon Carbide Rotating and Stationary Faces. Stainless Steel 316 Stationary Seat. Fluorocarbon Elastomers (DuPont Viton® or Equivalent). Stainless Steel 18-8 Cage and Spring. Maximum Temperature of Liquid Pumped 160°F (71°C).\*  
**Shaft Sleeve:** Alloy Steel 4130.  
**Priming Chamber:** Gray Iron 30 Housing w/Stainless Steel Float and Linkage.  
**Discharge Check Valve:** Ductile Iron Housing w/Buna-N Flapper.  
**Radial Bearing:** Open Single Row Ball.  
**Thrust Bearing:** Open Double Row Ball.  
**Bearing and Seal Cavity Lubrication:** SAE 30 Non-Detergent Oil.  
**Gaskets:** Vegetable Fiber and Buna-N.  
**O-Rings:** Buna-N.  
**Hardware:** Standard Plated Steel.  
**Bearing and Seal Cavity Oil Level Sight Gauges.**  
*\*Consult Factory for Applications Exceeding Maximum Pressure and/or Temperature Indicated.*  
**Standard Equipment:** Soundproof (EPA Average 68 dBA at 23 feet [7 meters] Under Load) Lightweight Aluminum Enclosure – Removable for Maintenance of Pump or Engine – w/Padlockable Door Panels. Gear-Driven Air Compressor. Combination Skid Base w/Fuel Tank. Strainer. Heated Priming Chamber Single Ball Type Float Switch.\*\*  
**Optional Equipment:** Suction Vacuum and Discharge Pressure Gauge Kit Tandem Axle Over-the-Road Trailer (Meets DOT Requirements) Available w/Either Electric or Hydraulic Surge Brakes, Running Lights, Jack Stands and Safety Cables/Chains. Submersible Transducer Liquid Level Sensor (50 Ft. [15 M] Cable Standard, Alternate Lengths Available).

**WARNING!**  
 Do not use in explosive atmosphere or for pumping volatile flammable liquids.

**ENGINE SPECIFICATIONS**

**Model:** Caterpillar C2.2T.  
**Type:** Four Cylinder, Four Cycle, Turbocharged, Liquid Cooled Diesel Engine.  
**Displacement:** 134 Cu. In. (2,2 Liters).  
**Governor:** Mechanical  
**Lubrication:** Forced Circulation.  
**Air Cleaner:** Dry Type.  
**Oil Reservoir:** 11.2 U.S. Qts. (10,6 liters) Refill.  
**Fuel Tank:** 42 U.S. Gals. (159 liters).  
**Full Load Operating Time:** 23.2 Hrs.  
**Starter:** 12V Electric.  
**Standard Features:** Full Feature Control including: Low Oil Pressure and High Coolant Temperature Safety Shut Down Switches. Autostart Instrument Panel Includes: Tachometer, Voltmeter, Hourmeter, Coolant Temperature Oil Pressure Gauge, Manual/Stop/Auto Key Switch, 10 Amp, Startup Warning Delay. Muffler w/Weather Cap. Throttle Control.

**\*\*50 Ft. (15 m) Standard Length; Dual Switches and Alternate Cable Lengths Available From the Factory.**

**CATERPILLAR PUBLISHED PERFORMANCE:**  
 Maximum Gross BHP (Continuous) 51 (38 kW) @ 2800 RPM



**THE GORMAN-RUPP COMPANY • MANSFIELD, OHIO**  
 GORMAN-RUPP OF CANADA LIMITED • ST. THOMAS, ONTARIO, CANADA

www.grpumps.com  
 Specifications Subject to Change Without Notice

Printed in U.S.A.

**Specification Data**

APPROXIMATE DIMENSIONS and WEIGHTS

NET WEIGHT:

SKID BASE

2815 LBS. (1277 KG.)

2-WHEEL

3365 LBS. (1526 K.G.)

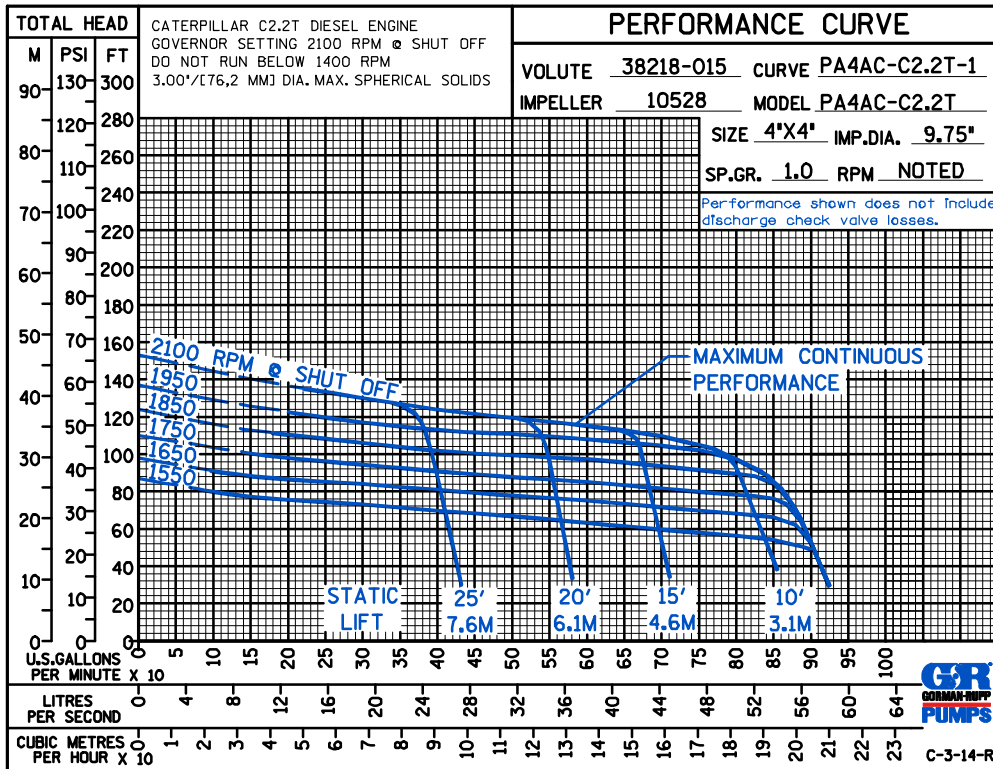
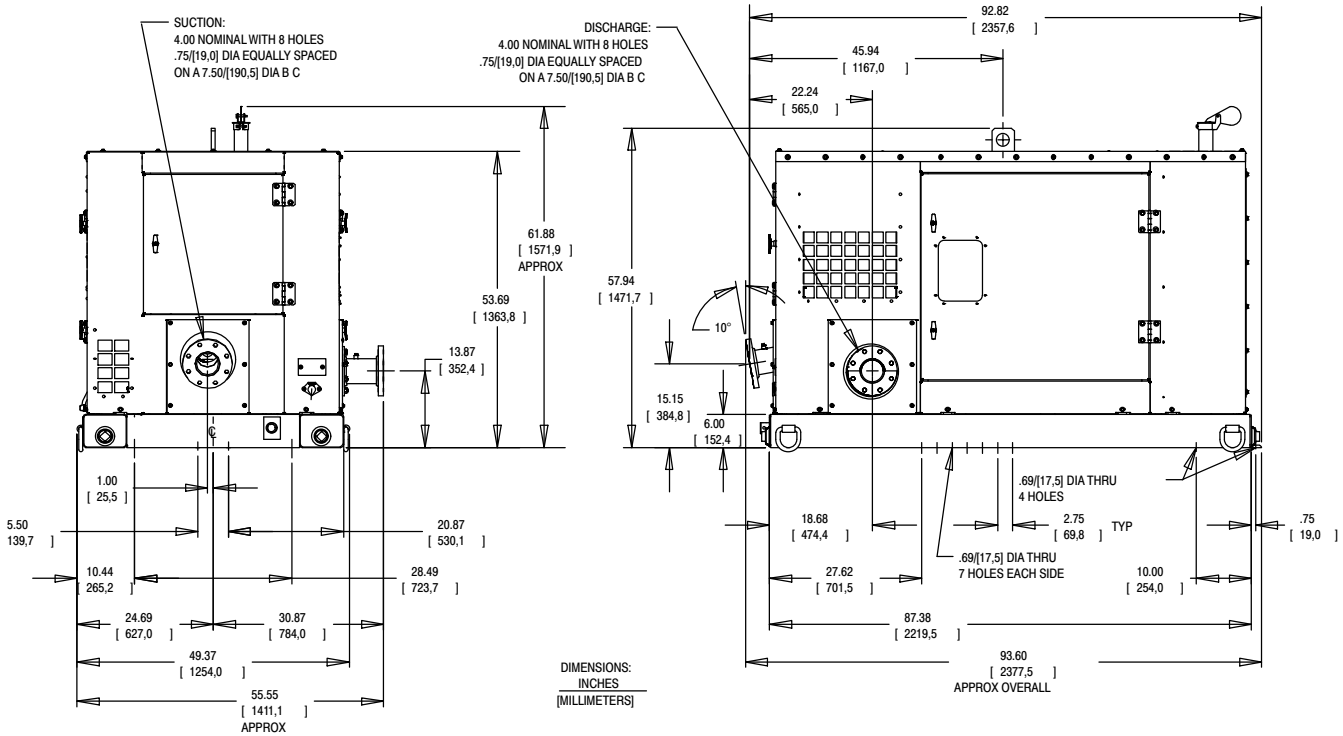
SHIPPING WEIGHT:

3015 LBS. (1368 KG.)

3565 LBS. (1617 K.G.)

SECTION CAT, PAGE 15C

POWERED BY CATERPILLAR C2.2T DIESEL ENGINE



THE GORMAN-RUPP COMPANY • MANSFIELD, OHIO

GORMAN-RUPP OF CANADA LIMITED • ST. THOMAS, ONTARIO, CANADA

Specifications Subject to Change Without Notice

Printed in U.S.A.