

U **Priming Assisted Centrifugal Environmental
Silent Pump w/Autostart
Model PA10A60-C4.4EAT-ESP /S1
Size 10" x 10**



VARIOUS PATENTS APPLY



Total Head		Capacity of Pump in U.S. Gallons per Minute (GPM) at Continuous Performance				
P.S.I.	Feet					
60.7	140	780	780	780	780	780
52.0	120	1590	1840	1920	1920	1920
43.4	100	1840	2400	2820	3020	3020
34.7	80	1920	2520	3020	3500	3620
26.0	60	2020	2580	3100	3630	3820
17.3	40	2100	2640	3180	3720	3920
8.7	20	2180	2700	3260	3820	4030
Suction Lift		24'	20'	15'	10'	5'

PUMP SPECIFICATIONS

Size: 10" x 10" (254 mm x 254 mm) Flanged.
Casing: Gray Iron 30.
 Maximum Operating Pressure 98 psi (676 kPa).*
Semi-Open Type, Two Vane Impeller: Ductile Iron 65-45-12.
 Handles 3.25" (82,6 mm) Diameter Spherical Solids.
Suction Spool: Gray Iron 30.
Impeller Shaft: Stainless Steel 17-4 PH.
Externally Adjustable Front Wear Ring: Ductile Iron 80-55-06.
Intermediate: Gray Iron 30.
Seal Plate: Gray Iron 30.
Seal: Mechanical, Oil-Lubricated, Double Floating, Self-Aligning. Silicon Carbide Rotating and Stationary Faces. Stainless Steel 316 Stationary Seat. Fluorocarbon Elastomers (DuPont Viton® or Equivalent). Stainless Steel 316 Cage and Spring. Maximum Temperature of Liquid Pumped, 160°F (71°C).*
Priming Chamber: Gray Iron 30 Housing w/Stainless Steel Float and Linkage.
Discharge Check Valve: Ductile Iron Housing w/Buna-N Flapper.
Radial Bearing: Open Single Ball.
Thrust Bearing: Open Double Ball.
Bearing and Seal Cavity Lubrication: SAE 30 Non-Detergent Oil.
Gaskets: Resistant Synthetic Rubber, PTFE, Cork, Vegetable Fiber, and Compressed Synthetic Fibers.
O-Rings: Buna-N.
Hardware: Standard Plated Steel.
Bearing and Seal Cavity Oil Level Sight Gauges.
**Consult Factory for Applications Exceeding Maximum Pressure and/or Temperature Indicated.*
Standard Equipment: Gear Driven Air Compressor. Strainer. Soundproof (EPA Average 68 dBA at 23 feet [7 meters] Under Load). Lightweight Aluminum Enclosure - Removable for Maintenance of Pump or Engine - w/Lockable Door Panels. Spill Containment Base w/Integral Drains and Fork Lift Pockets.Heated Priming Chamber Single Ball Type Float Switch.**
Optional Equipment: Battery. NPT Threaded Flanges. Tandem Axle Over-the-Road Trailer (Meets DOT Requirements) Available w/Either Electric or Hydraulic Surge Brakes, Running Lights, Jack Stands and Safety Chains/Cables. Submersible Transducer Liquid Level Sensor kit.**
***50 Ft. (15 m) Standard Length; Dual Switches and Alternate Cable Lengths Available From the Factory.*



WARNING!
Do not use in explosive atmosphere or for pumping volatile flammable liquids.

ENGINE SPECIFICATIONS

Model: Caterpillar C4.4EAT.
Type: Four Cylinder, Four Cycle, Turbo-Charged, Charge Air Cooled, Liquid Cooled Diesel Engine.
Displacement: 269 Cu. In. (4,41 Liters).
Lubrication: Forced Circulation.
Air Cleaner: Dry Type.
Fuel Tank: 145 U.S. Gals. (549 liters).
Full Load Operating Time: 25 Hrs.
Starter: 12V Electric.
Standard Features: Full Feature Control including: Low Oil Pressure and High Coolant Temperature Safety Shut Down Switches. Autostart Instrument Panel Includes: Tachometer, Voltmeter, Hourmeter, Coolant Temperature, Oil Pressure Display. Manual/Stop/Auto Key Switch, 10 Amp Fuse, Startup Warning Delay. Muffler w/Weather Cap. Throttle Control.

CATERPILLAR PUBLISHED PERFORMANCE:

Maximum Gross BHP (continuous)
120 (90 kW) @ 2200 RPM



THE GORMAN-RUPP COMPANY • MANSFIELD, OHIO

GORMAN-RUPP OF CANADA LIMITED • ST. THOMAS, ONTARIO, CANADA

www.grpumps.com

Specifications Subject to Change Without Notice

Printed in U.S.A.

Specification Data

APPROXIMATE
DIMENSIONS and WEIGHTS

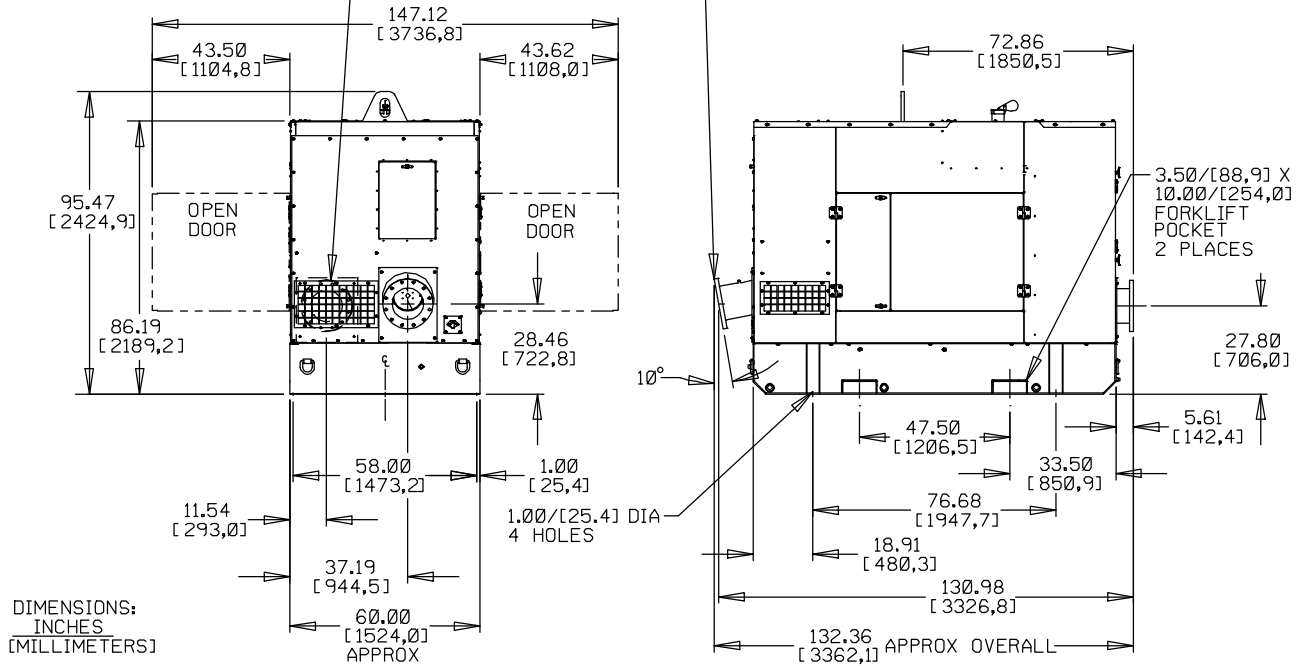
NET WEIGHT: 6500 LBS. (2948 KG.)
SHIPPING DIMENSIONS: 576 CU. FT. (16,3 CU. M.)

SECTION CAT, PAGE 95C

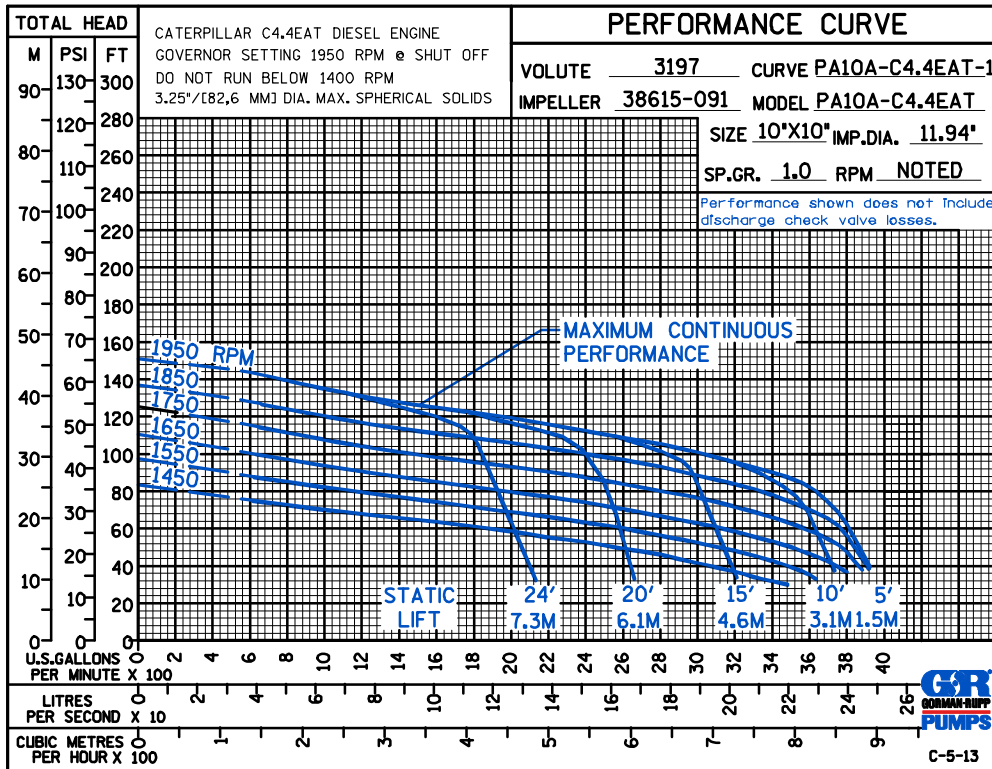
DISCHARGE (OPPOSITE END):
10.00 NOMINAL WITH 12 HOLES
1.00/[25.4] DIA EQUALLY SPACED
ON A 14.25/[362.0] DIA BC

SUCTION:
10.00 NOMINAL WITH 12 HOLES
1.00/[25.4] DIA EQUALLY SPACED
ON A 14.25/[362.0] DIA BC

POWERED BY CATERPILLAR C4.4EAT DIESEL ENGINE



DIMENSIONS:
INCHES
[MILLIMETERS]



THE GORMAN-RUPP COMPANY • MANSFIELD, OHIO

GORMAN-RUPP OF CANADA LIMITED • ST. THOMAS, ONTARIO, CANADA

Specifications Subject to Change Without Notice

Printed in U.S.A.