

NOTES

1) This drawing is for illustration purposes only and is subject to change without notice. TIC is not responsible for any errors or omissions.

Drawn by
JE
Date 02/07/06

Approved by
JIS
Date 02/07/06

TOSHIBA
INTERNATIONAL CORPORATION
Houston Texas, USA

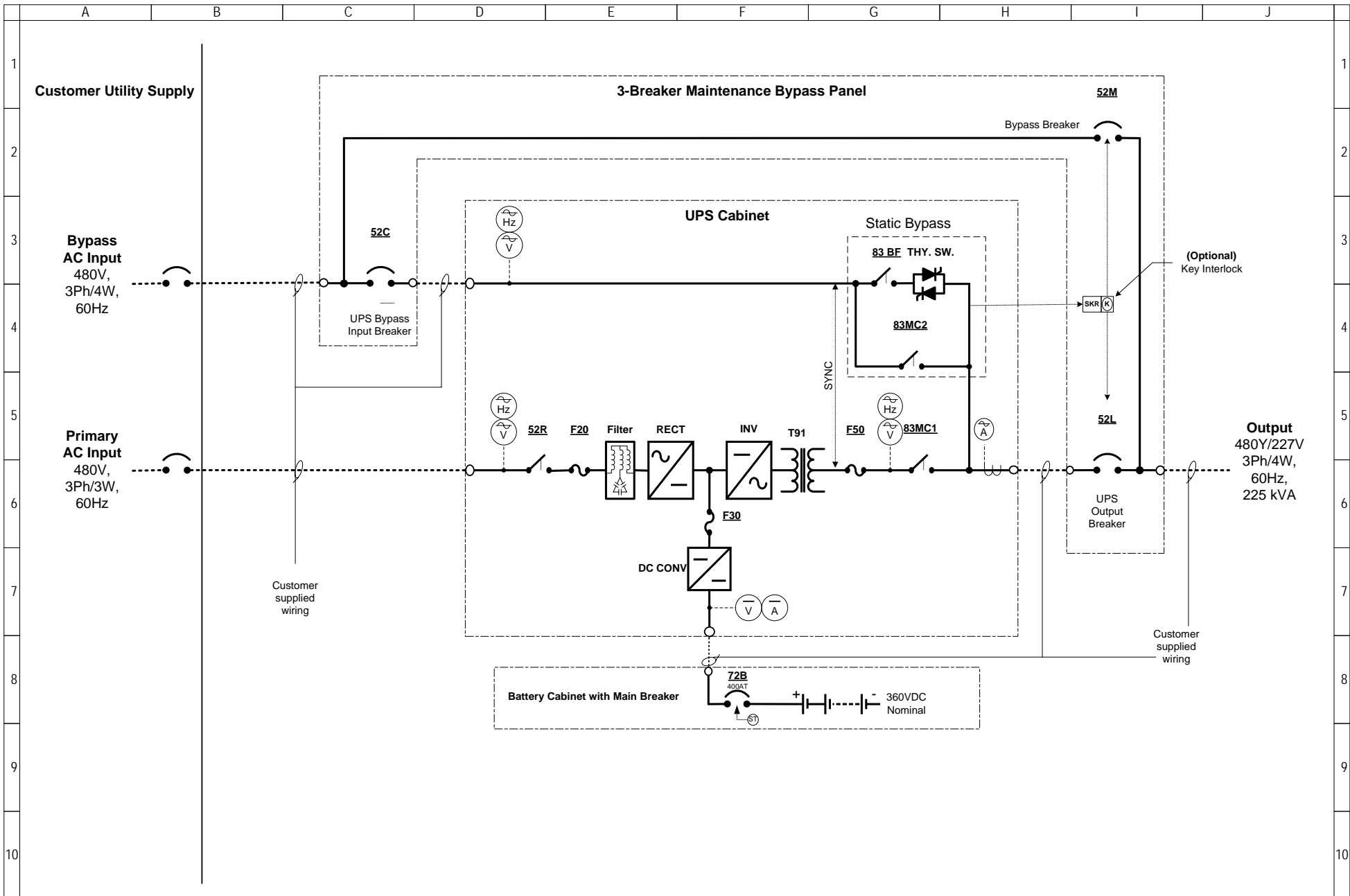
THIS MATERIAL IS THE EXCLUSIVE PROPERTY OF TOSHIBA INTERNATIONAL CORPORATION AND SHALL NOT BE REPRODUCED, USED, OR DISCLOSED TO OTHERS UNLESS PRIOR WRITTEN AUTHORIZATION IS OBTAINED.

TITLE

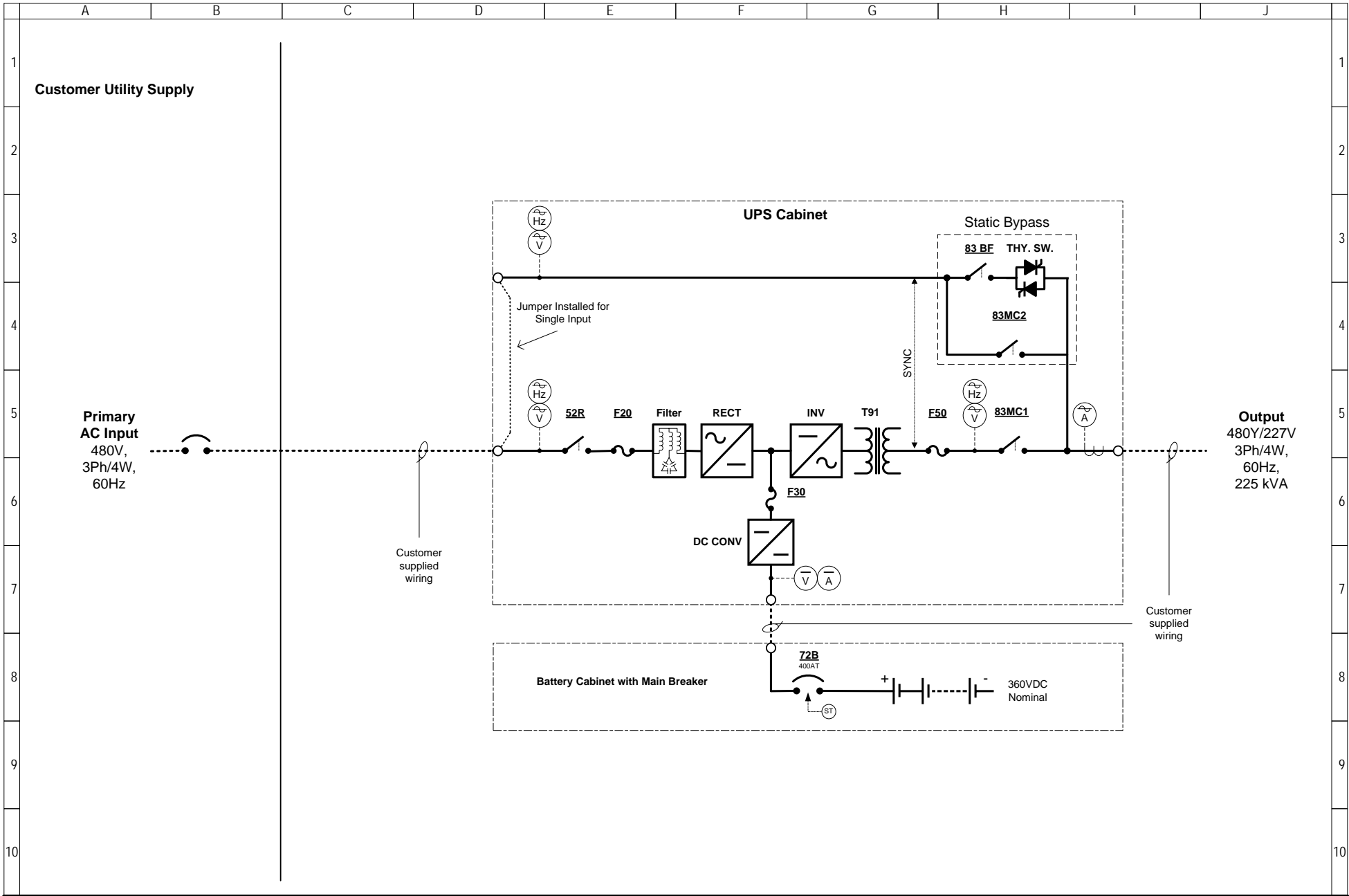
One-Line Diagram
225 kVA **G8000 Series UPS**
480V Single Input, 480Y/277V Output,
with External 3-Breaker Bypass Panel

DRAWING NO. T80S3K22KX6NSN-E3-SI

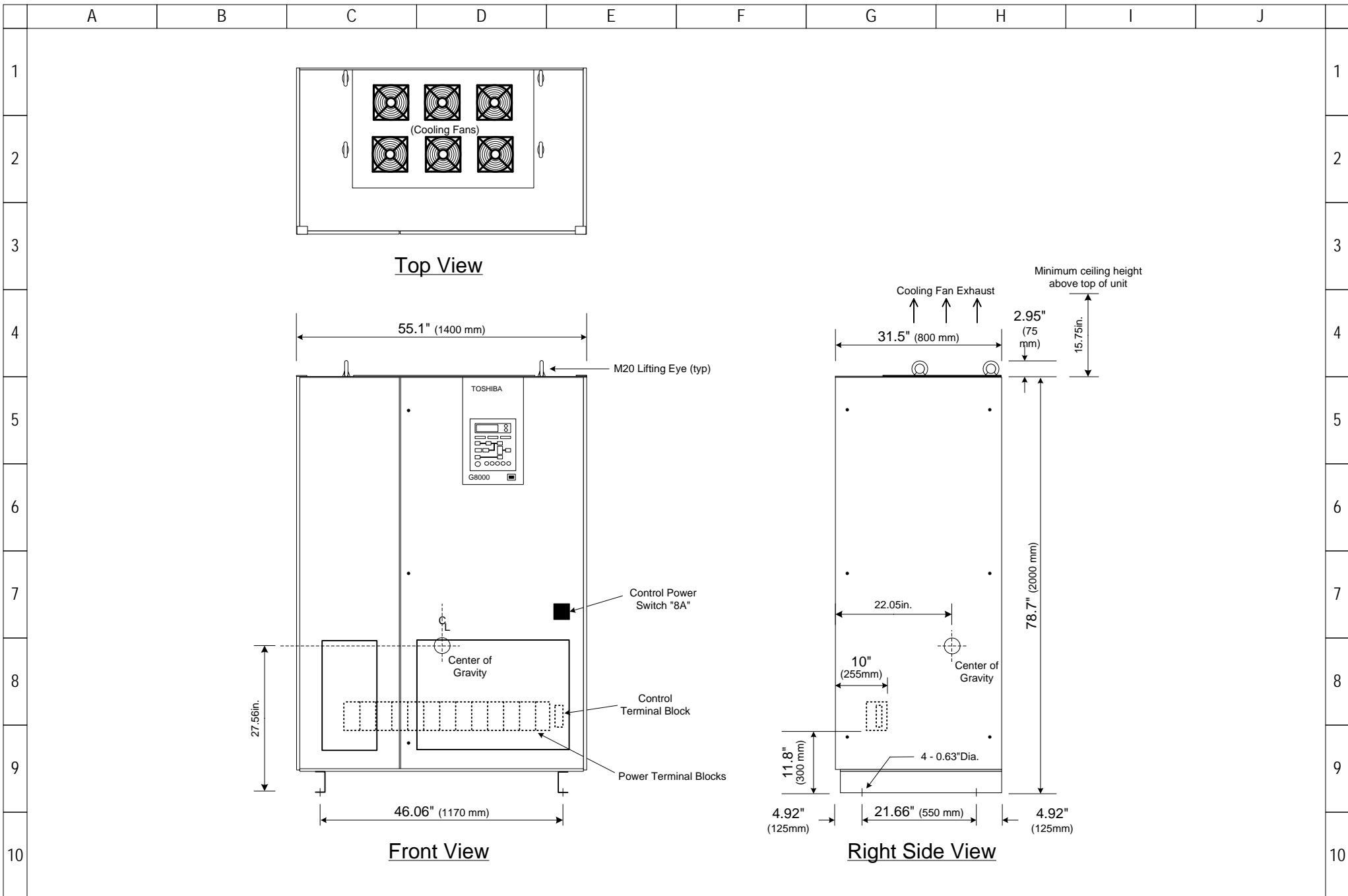
REV. 2.0



<p>NOTES</p> <p>1) This drawing is for illustration purposes only and is subject to change without notice. TIC is not responsible for any errors or omissions.</p>	<p>Drawn by JE Date 08/30/05</p> <p>Approved by JIS Date 08/30/05</p>	<p style="text-align: center;">TOSHIBA</p> <p style="text-align: center;">INTERNATIONAL CORPORATION Houston Texas, USA</p> <p style="text-align: center;">THIS MATERIAL IS THE EXCLUSIVE PROPERTY OF TOSHIBA INTERNATIONAL CORPORATION AND SHALL NOT BE REPRODUCED, USED, OR DISCLOSED TO OTHERS UNLESS PRIOR WRITTEN AUTHORIZATION IS OBTAINED.</p>	<p>TITLE</p> <p style="text-align: center;">One-Line Diagram 225 kVA G8000 Series UPS 480V Dual Input, 480Y/277V Output, with External 3-Breaker Bypass Panel</p>	
			<p>DRAWING NO.</p> <p style="text-align: center;">T80S3K22KK6XSN-E3-DI</p>	<p>REV.</p> <p style="text-align: center;">2.0</p>



<p>NOTES</p> <p>1) This drawing is for illustration purposes only and is subject to change without notice. TIC is not responsible for any errors or omissions.</p>	<p>Drawn by JE Date 08/30/05 Approved by JIS Date 08/30/05</p>	<p style="text-align: center;">TOSHIBA INTERNATIONAL CORPORATION Houston Texas, USA</p> <p style="text-align: center; font-size: small;">THIS MATERIAL IS THE EXCLUSIVE PROPERTY OF TOSHIBA INTERNATIONAL CORPORATION AND SHALL NOT BE REPRODUCED, USED, OR DISCLOSED TO OTHERS UNLESS PRIOR WRITTEN AUTHORIZATION IS OBTAINED.</p>	<p>TITLE</p> <p style="text-align: center;">One-Line Diagram 225 kVA G8000 Series UPS 480V Dual Feed, 480Y/277V Output</p> <hr/> <p>DRAWING NO. T80S3K22KK6XSN-SI</p> <p>REV. 2.0</p>
---	--	--	--



NOTES

- 1) This drawing is for illustration purposes only and is subject to change without notice. TIC is not responsible for any errors or omissions.
- 2) UPS enclosure type: NEMA 1 Free-standing.
- 3) Approximate overall weight: 3,300 Lbs. (1,500 kg)
- 4) Approximate FL heat loss: 39,230 Btu/Hr (11.5 kW)

Drawn by
EO
Date 05/19/04
Approved by
JIS
Date 05/19/04

TOSHIBA
INTERNATIONAL CORPORATION
Houston Texas, USA

THIS MATERIAL IS THE EXCLUSIVE PROPERTY OF
TOSHIBA INTERNATIONAL CORPORATION AND SHALL NOT
BE REPRODUCED, USED, OR DISCLOSED TO OTHERS
UNLESS PRIOR WRITTEN AUTHORIZATION IS OBTAINED.

TITLE Outline Diagram 225 kVA G8000 Series UPS, 480V Input and Output, Standard UPS Cabinet	
DRAWING NO. T80S3K22K-OUTLINE	REV. 1.0