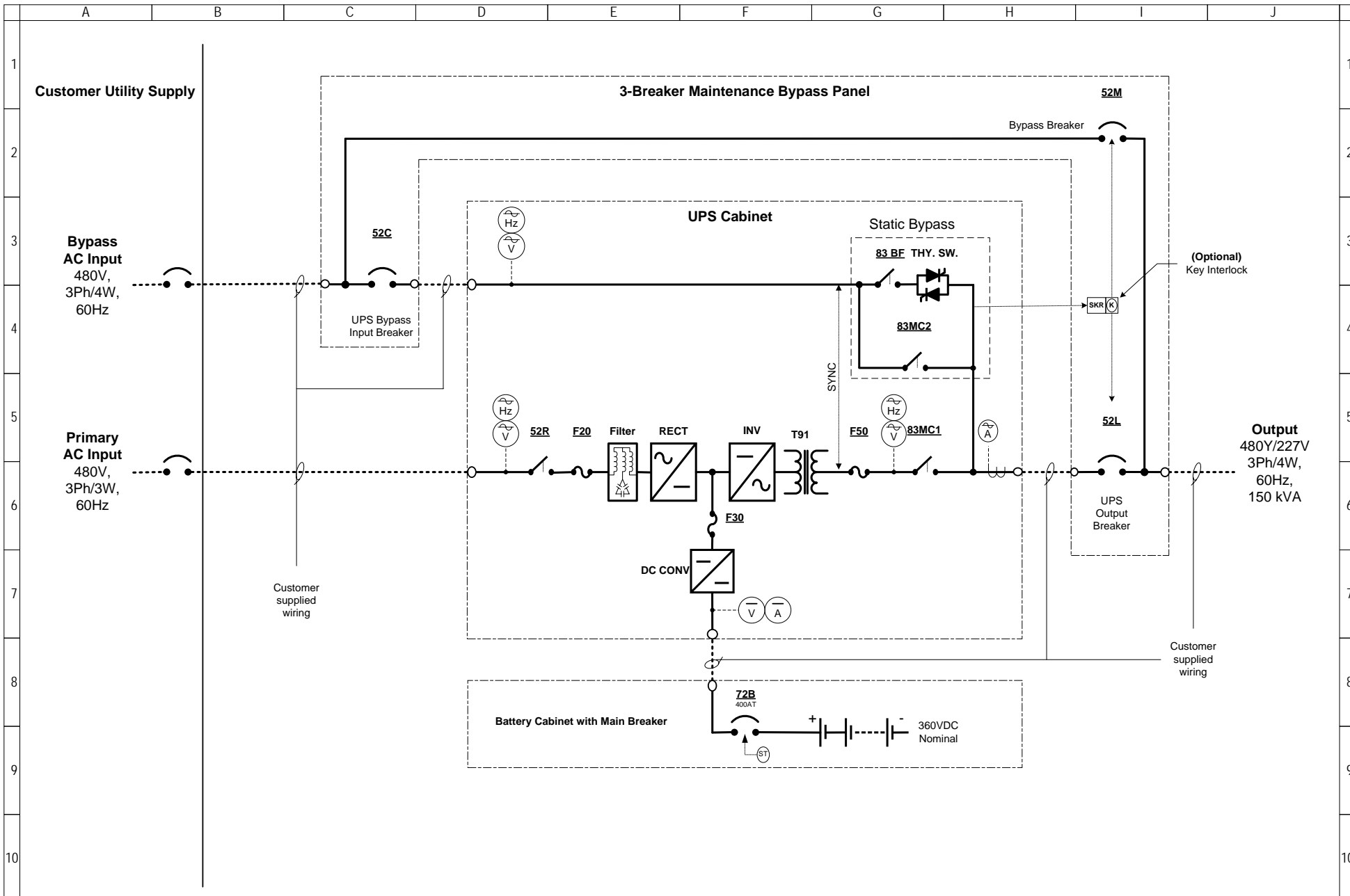
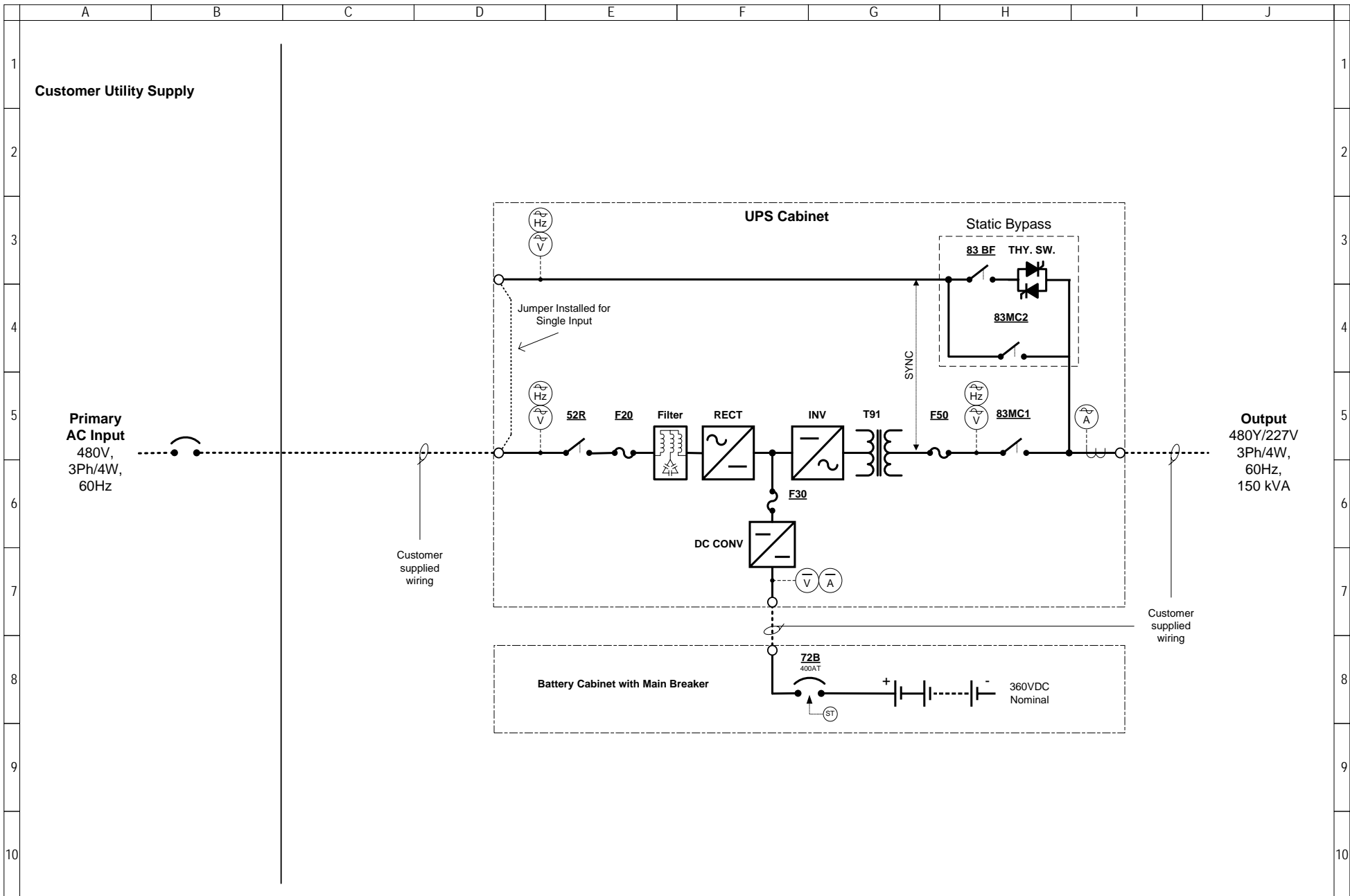


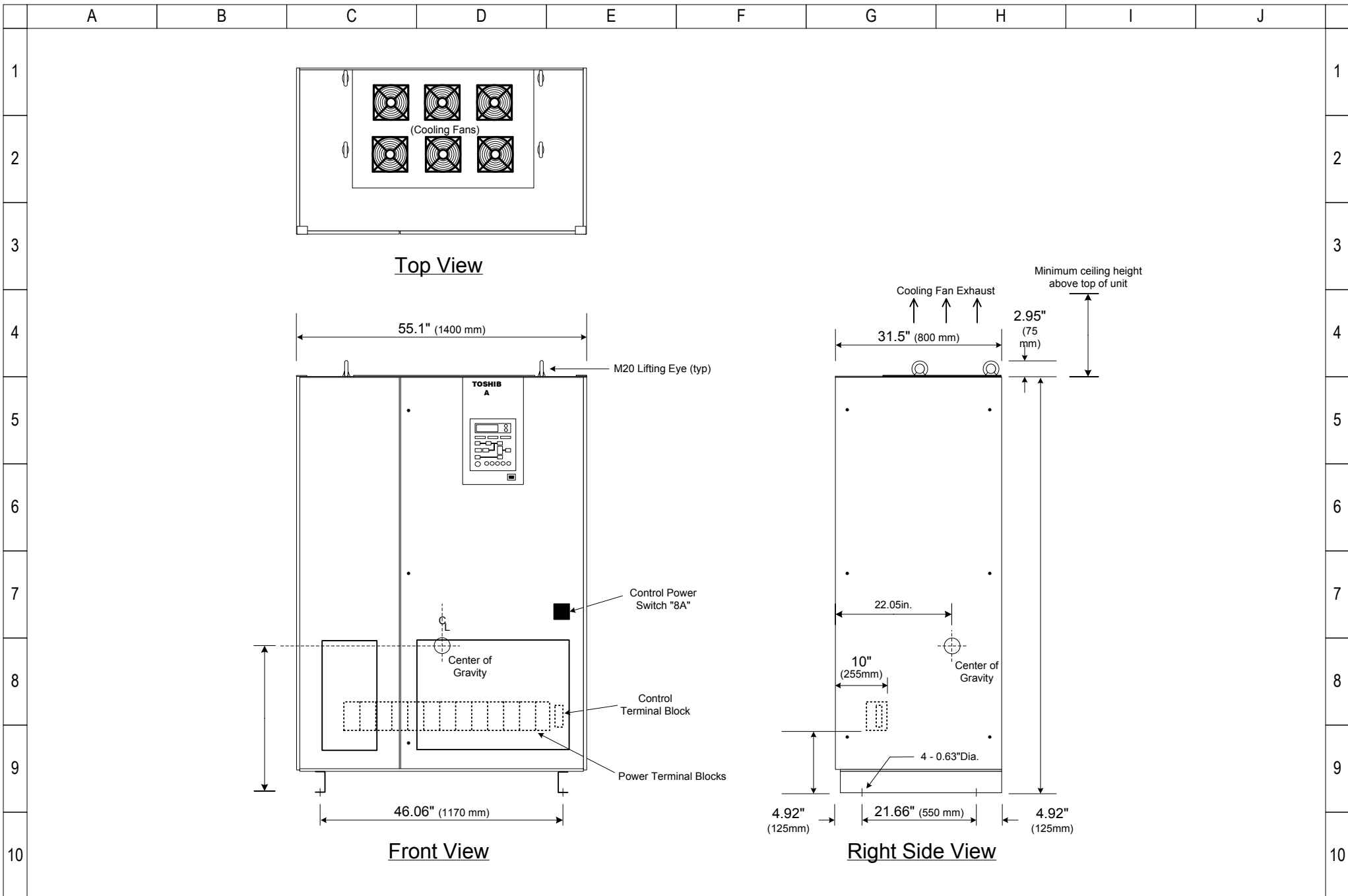
<p><b>NOTES</b></p> <p>1) This drawing is for illustration purposes only and is subject to change without notice. TIC is not responsible for any errors or omissions.</p>	<p>Drawn by JE Date 02/07/06</p> <p>Approved by JIS Date 02/07/06</p>	<p style="text-align: center;"><b>TOSHIBA</b></p> <p style="text-align: center;">INTERNATIONAL CORPORATION Houston Texas, USA</p> <p style="text-align: center;">THIS MATERIAL IS THE EXCLUSIVE PROPERTY OF TOSHIBA INTERNATIONAL CORPORATION AND SHALL NOT BE REPRODUCED, USED, OR DISCLOSED TO OTHERS UNLESS PRIOR WRITTEN AUTHORIZATION IS OBTAINED.</p>	<p><b>TITLE</b></p> <p style="text-align: center;">One-Line Diagram 150 kVA <b>G8000 Series</b> UPS 480V Dual Input, 480Y/277V Output, with External 3-Breaker Bypass Panel</p> <p>DRAWING NO. T80S3K15KK6XSNH-E3-DI</p> <p>REV. 2.0</p>
---	---	---	--



<p><b>NOTES</b></p> <p>1) This drawing is for illustration purposes only and is subject to change without notice. TIC is not responsible for any errors or omissions.</p>	<p>Drawn by JE Date 02/07/06</p> <p>Approved by JIS Date 02/07/06</p>	<p style="text-align: center;"><b>TOSHIBA</b></p> <p style="text-align: center;">INTERNATIONAL CORPORATION Houston Texas, USA</p> <p style="text-align: center;">THIS MATERIAL IS THE EXCLUSIVE PROPERTY OF TOSHIBA INTERNATIONAL CORPORATION AND SHALL NOT BE REPRODUCED, USED, OR DISCLOSED TO OTHERS UNLESS PRIOR WRITTEN AUTHORIZATION IS OBTAINED.</p>	<p><b>TITLE</b></p> <p style="text-align: center;">One-Line Diagram 150 kVA <b>G8000 Series</b> UPS 480V Dual Input, 480Y/277V Output, with External 3-Breaker Bypass Panel</p> <table border="1" style="width: 100%;"> <tr> <td data-bbox="1491 1477 1890 1550"> <p><b>DRAWING NO.</b></p> <p style="text-align: center;">T80S3K15KK6XSNH-E3-DI</p> </td> <td data-bbox="1890 1477 1995 1550"> <p><b>REV.</b></p> <p style="text-align: center;">2.0</p> </td> </tr> </table>	<p><b>DRAWING NO.</b></p> <p style="text-align: center;">T80S3K15KK6XSNH-E3-DI</p>	<p><b>REV.</b></p> <p style="text-align: center;">2.0</p>
<p><b>DRAWING NO.</b></p> <p style="text-align: center;">T80S3K15KK6XSNH-E3-DI</p>	<p><b>REV.</b></p> <p style="text-align: center;">2.0</p>				



<p><b>NOTES</b></p> <p>1) This drawing is for illustration purposes only and is subject to change without notice. TIC is not responsible for any errors or omissions.</p> <p>2) Interconnections between battery cabinets are provided by others at installation.</p>	<p>Drawn by JE Date 08/30/05 Approved by JIS Date 08/30/05</p>	<p style="text-align: center;"><b>TOSHIBA</b> INTERNATIONAL CORPORATION Houston Texas, USA</p> <p style="text-align: center; font-size: small;">THIS MATERIAL IS THE EXCLUSIVE PROPERTY OF TOSHIBA INTERNATIONAL CORPORATION AND SHALL NOT BE REPRODUCED, USED, OR DISCLOSED TO OTHERS UNLESS PRIOR WRITTEN AUTHORIZATION IS OBTAINED.</p>	<p>TITLE</p> <p style="text-align: center;">One-Line Diagram 150 kVA <b>G8000 Series</b> UPS 480V Dual Feed, 480Y/277V Output</p> <hr/> <p>DRAWING NO. T80S3K15KK6XSNH-SI</p> <p>REV. 2.0</p>
---	--	--	---



- NOTES**
- 1) This drawing is for illustration purposes only and is subject to change without notice. TIC is not responsible for any errors or omissions.
  - 2) UPS enclosure type: NEMA 1 Free-standing.
  - 3) Approximate overall weight: 2,756 Lbs. (1,250 kg)
  - 4) Approximate FL heat loss: 30,740 Btu/Hr (9 kW)

DRAWN BY  
JIS

DATE  
06/25/04

**TOSHIBA**  
INTERNATIONAL CORPORATION  
Houston Texas, USA

G8000

THIS MATERIAL IS THE EXCLUSIVE PROPERTY OF TOSHIBA INTERNATIONAL CORPORATION AND SHALL NOT BE REPRODUCED, USED, OR DISCLOSED TO OTHERS UNLESS PRIOR WRITTEN AUTHORIZATION IS OBTAINED.

TITLE  
Outline Diagram  
150kVA G8000 Series UPS,  
480V Input and Output,  
Standard UPS Cabinet

DRAWING NO.  
T80S3K15K-OUTLINE

REV.  
1.1