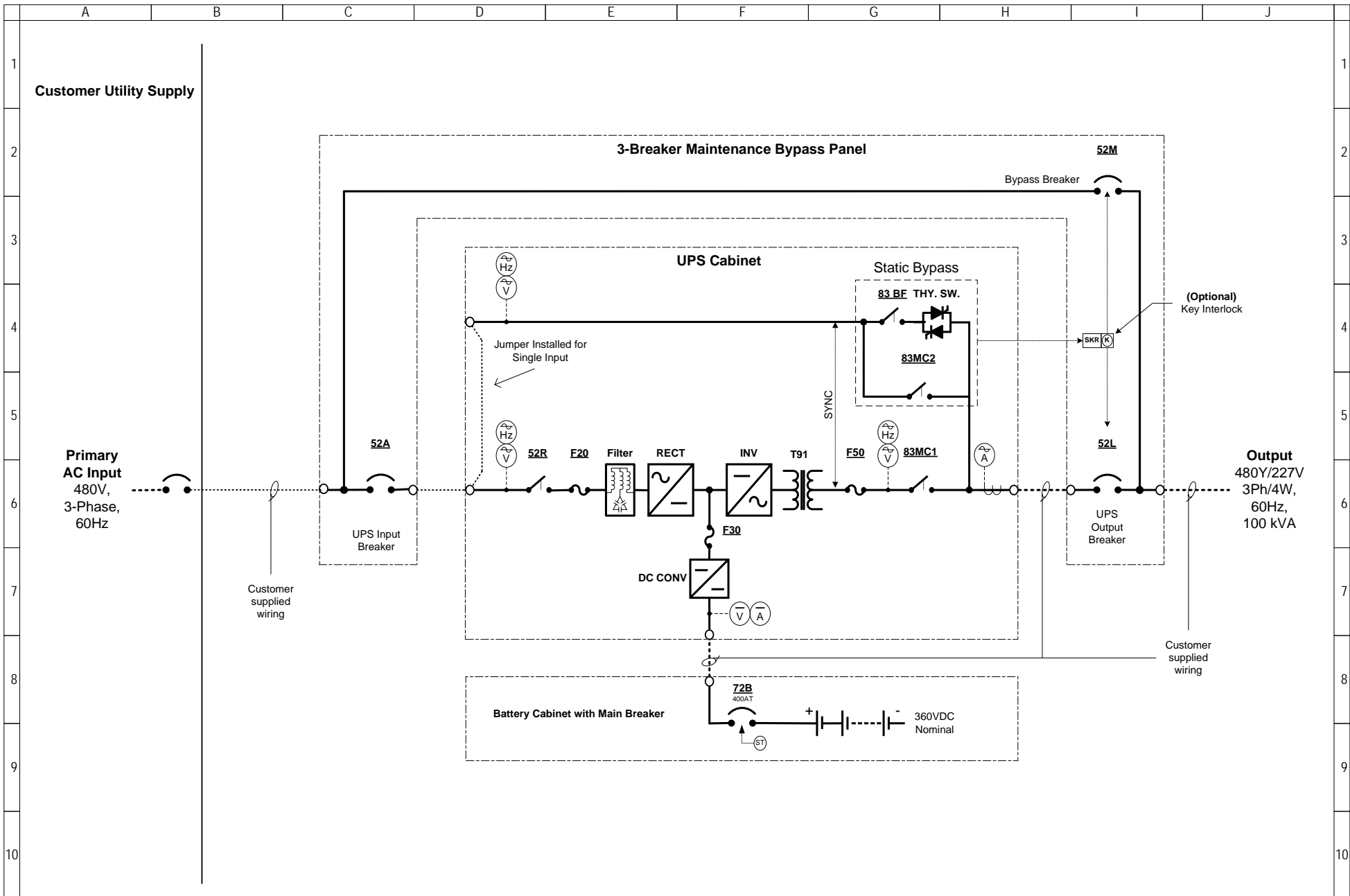
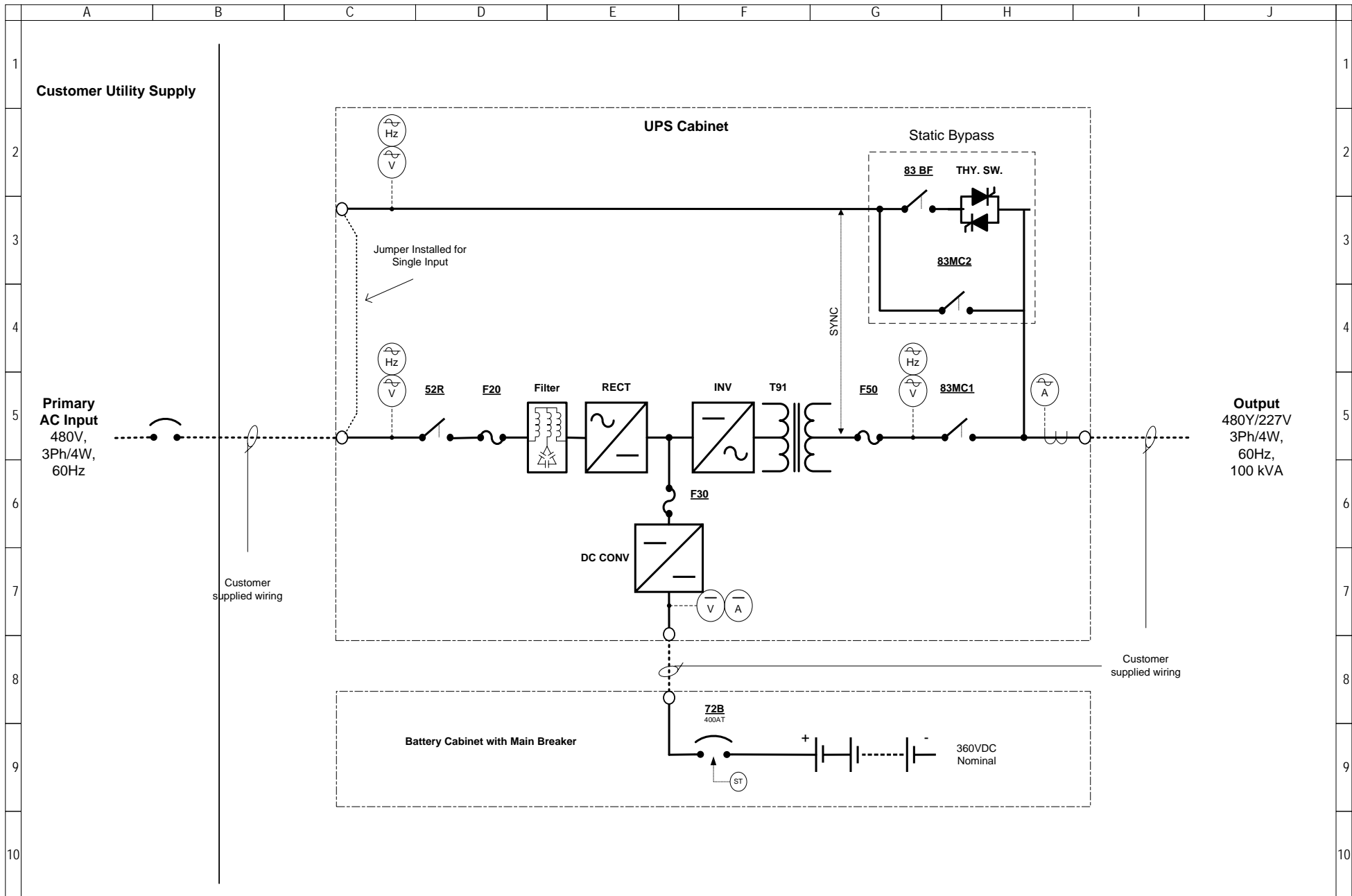


<p>NOTES</p> <p>1) This drawing is for illustration purposes only and is subject to change without notice. TIC is not responsible for any errors or omissions.</p>	<p>Drawn by JE Date 02/07/06</p> <p>Approved by JIS Date 02/07/06</p>	<p style="text-align: center;">TOSHIBA</p> <p style="text-align: center;">INTERNATIONAL CORPORATION Houston Texas, USA</p> <p style="text-align: center;">THIS MATERIAL IS THE EXCLUSIVE PROPERTY OF TOSHIBA INTERNATIONAL CORPORATION AND SHALL NOT BE REPRODUCED, USED, OR DISCLOSED TO OTHERS UNLESS PRIOR WRITTEN AUTHORIZATION IS OBTAINED.</p>	<p>TITLE</p> <p style="text-align: center;">One-Line Diagram 100 kVA G8000 Series UPS 480V Dual Input, 480Y/277V Output, with External 3-Breaker Bypass Panel</p> <p>DRAWING NO. REV.</p> <p style="text-align: center;">T80S3K10KK6XSNH-E3-DI 2.1</p>
---	---	---	---



<p>NOTES</p> <p>1) This drawing is for illustration purposes only and is subject to change without notice. TIC is not responsible for any errors or omissions.</p>	<p>Drawn by JE Date 08/30/05</p> <p>Approved by JIS Date 08/30/05</p>	<p style="text-align: center;">TOSHIBA</p> <p style="text-align: center;">INTERNATIONAL CORPORATION Houston Texas, USA</p> <p style="text-align: center;">THIS MATERIAL IS THE EXCLUSIVE PROPERTY OF TOSHIBA INTERNATIONAL CORPORATION AND SHALL NOT BE REPRODUCED, USED, OR DISCLOSED TO OTHERS UNLESS PRIOR WRITTEN AUTHORIZATION IS OBTAINED.</p>	<p>TITLE</p> <p style="text-align: center;">One-Line Diagram 100 kVA G8000 Series UPS 480V Single Input, 480Y/277V Output, with External 3-Breaker Bypass Panel</p> <table border="1" style="width: 100%;"> <tr> <td data-bbox="1491 1477 1900 1549"> <p>DRAWING NO. T80S3K10KX6NSN2-E3-SI</p> </td> <td data-bbox="1900 1477 2003 1549"> <p>REV. 2.0</p> </td> </tr> </table>	<p>DRAWING NO. T80S3K10KX6NSN2-E3-SI</p>	<p>REV. 2.0</p>
<p>DRAWING NO. T80S3K10KX6NSN2-E3-SI</p>	<p>REV. 2.0</p>				



NOTES

- 1) This drawing is for illustration purposes only and is subject to change without notice. TIC is not responsible for any errors or omissions.
- 2) Interconnections between battery cabinets are provided by others at installation.

Drawn by
JE
Date 08/30/05
Approved by
JIS
Date 08/30/05

TOSHIBA

INTERNATIONAL CORPORATION
Houston Texas, USA

THIS MATERIAL IS THE EXCLUSIVE PROPERTY OF TOSHIBA INTERNATIONAL CORPORATION AND SHALL NOT BE REPRODUCED, USED, OR DISCLOSED TO OTHERS UNLESS PRIOR WRITTEN AUTHORIZATION IS OBTAINED.

TITLE

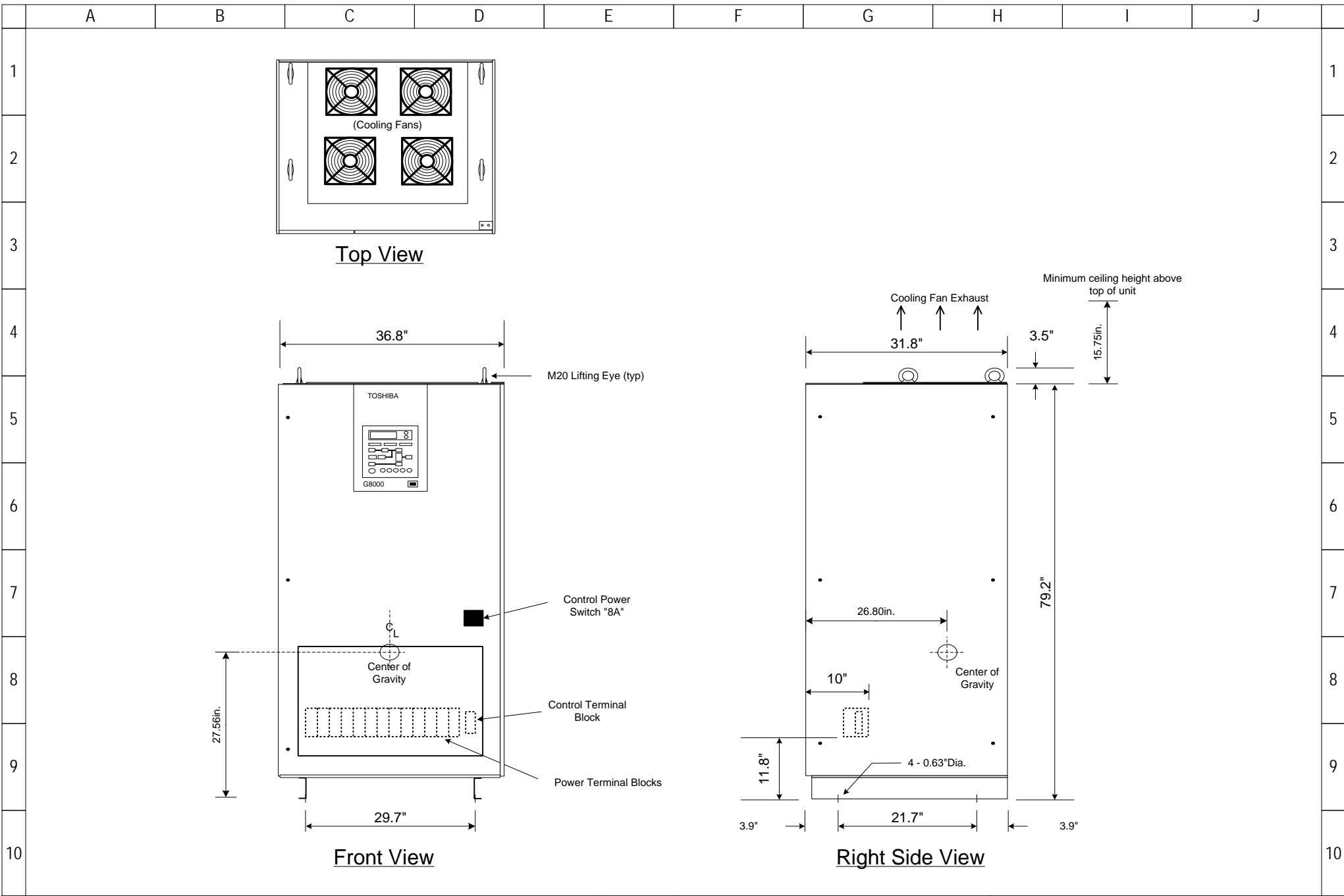
One-Line Diagram
100 kVA **G8000 Series** UPS
480V Dual Feed, 480Y/277V Output

DRAWING NO.

T80S3K10KK6XSNH-SI

REV.

2.0



NOTES

- 1) This drawing is for illustration purposes only and is subject to change without notice. TIC is not responsible for any errors or omissions.
- 2) UPS enclosure type: NEMA 1 Free-standing.
- 3) Approximate overall weight: 2,645 Lbs. (1,200 kg)
- 4) Approximate FL heat loss: 20,478 Btu/Hr (6 kW)

Drawn by
JE
Date 10/06/05
Approved by

TOSHIBA
INTERNATIONAL CORPORATION
Houston Texas, USA

THIS MATERIAL IS THE EXCLUSIVE PROPERTY OF TOSHIBA INTERNATIONAL CORPORATION AND SHALL NOT BE REPRODUCED, USED, OR DISCLOSED TO OTHERS UNLESS PRIOR WRITTEN AUTHORIZATION IS OBTAINED.

TITLE Outline Diagram 100kVA G8000 Series UPS, 480V Input and Output, Standard UPS Cabinet	
DRAWING NO. T80S3K10K-OUTLINE-PHASE 2	REV. 1.0